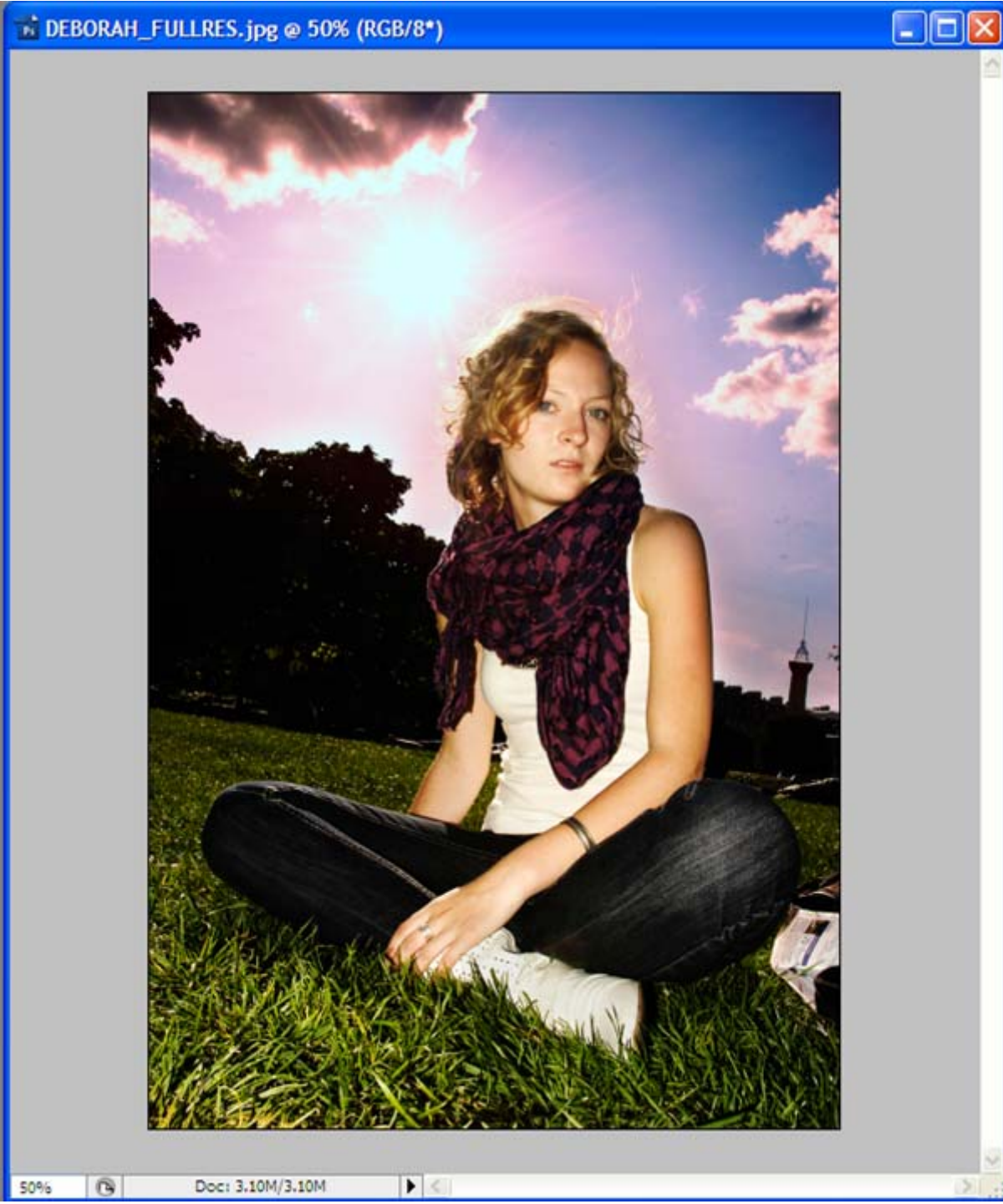
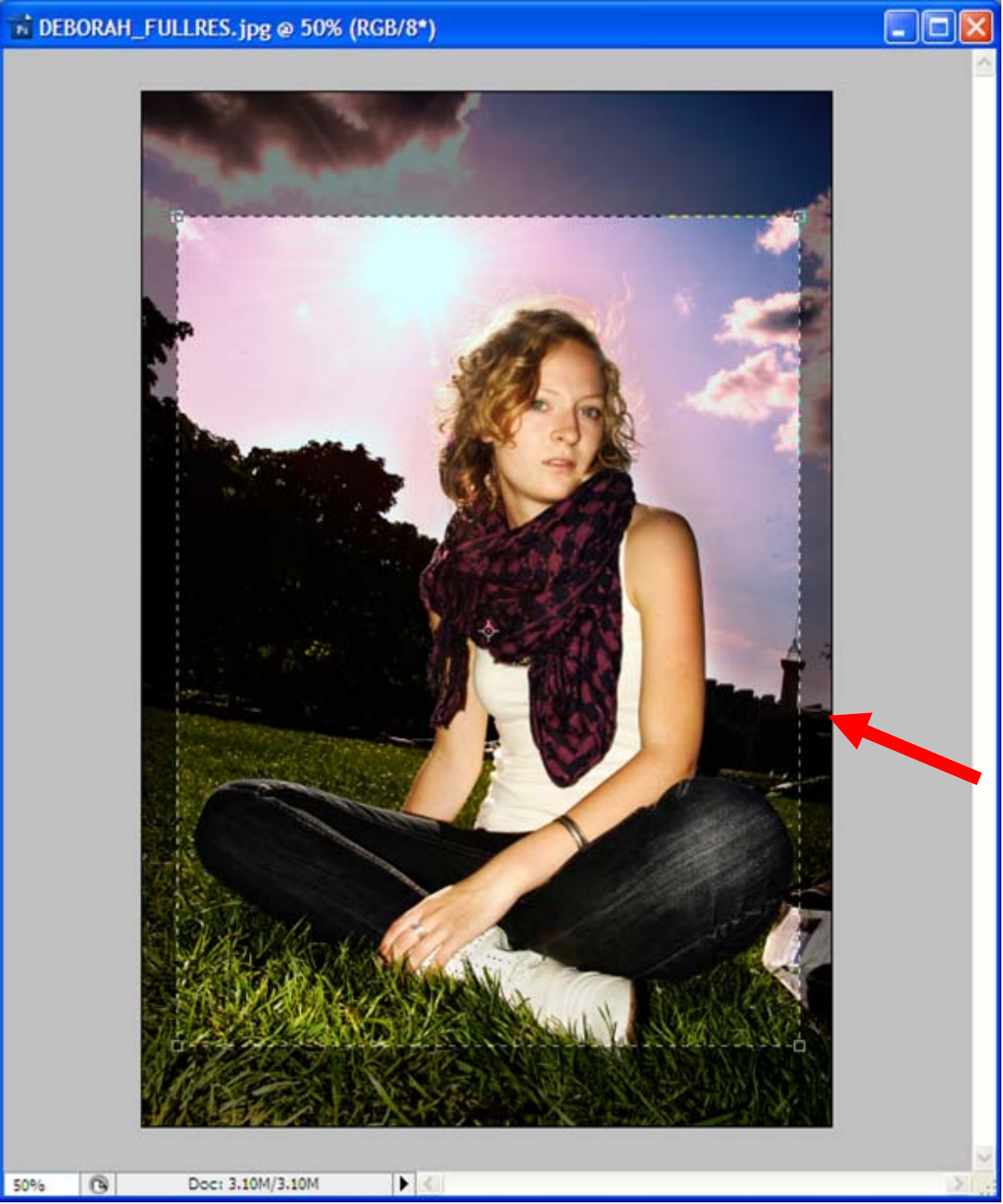


How to solve wrapping issues
when there is not enough border
on the image

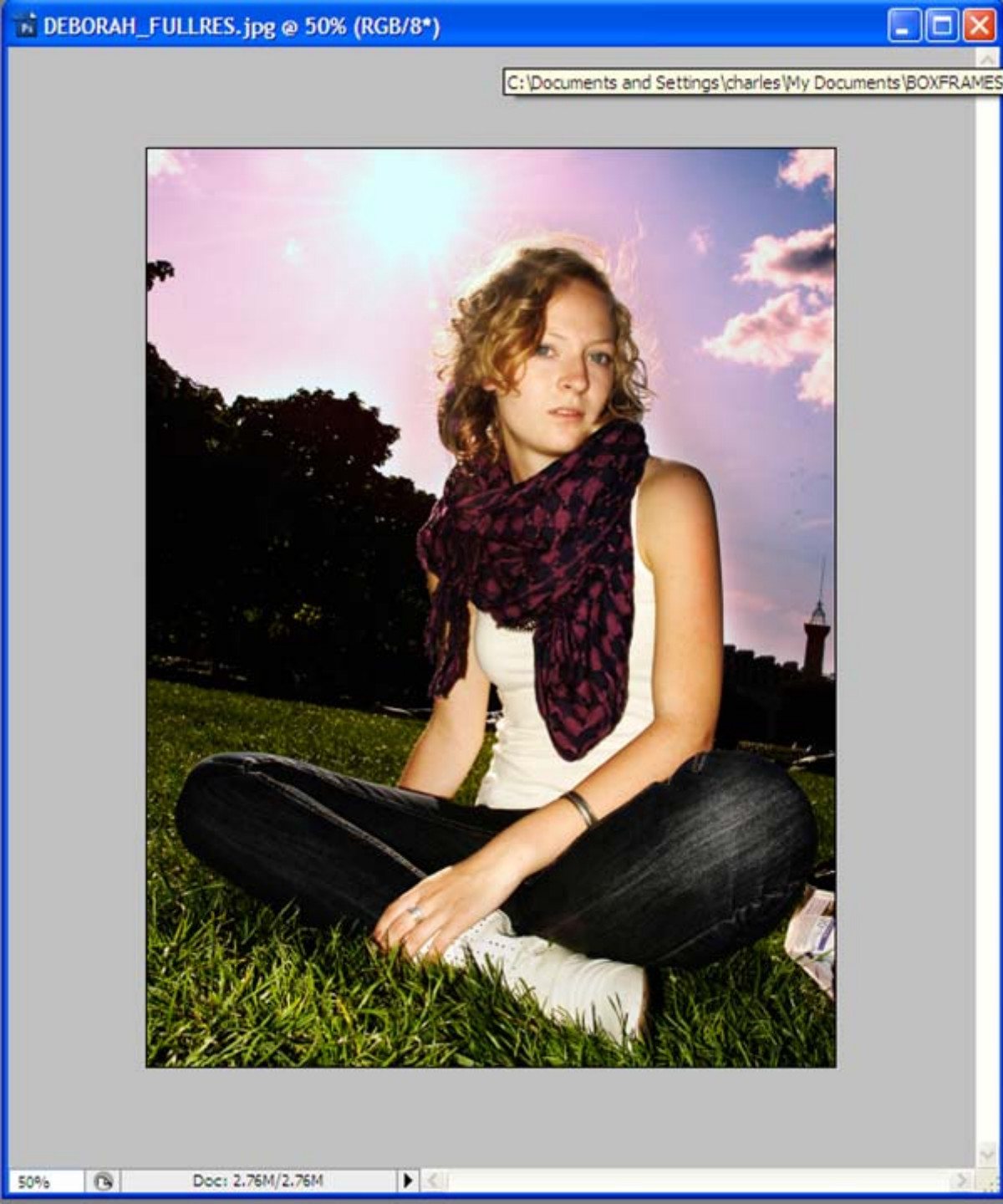


Original Image
30x45cm and we need to
make a 30x40cm boxiprint



Cropped to 30x40cm

Problem is that there is not enough edge to wrap

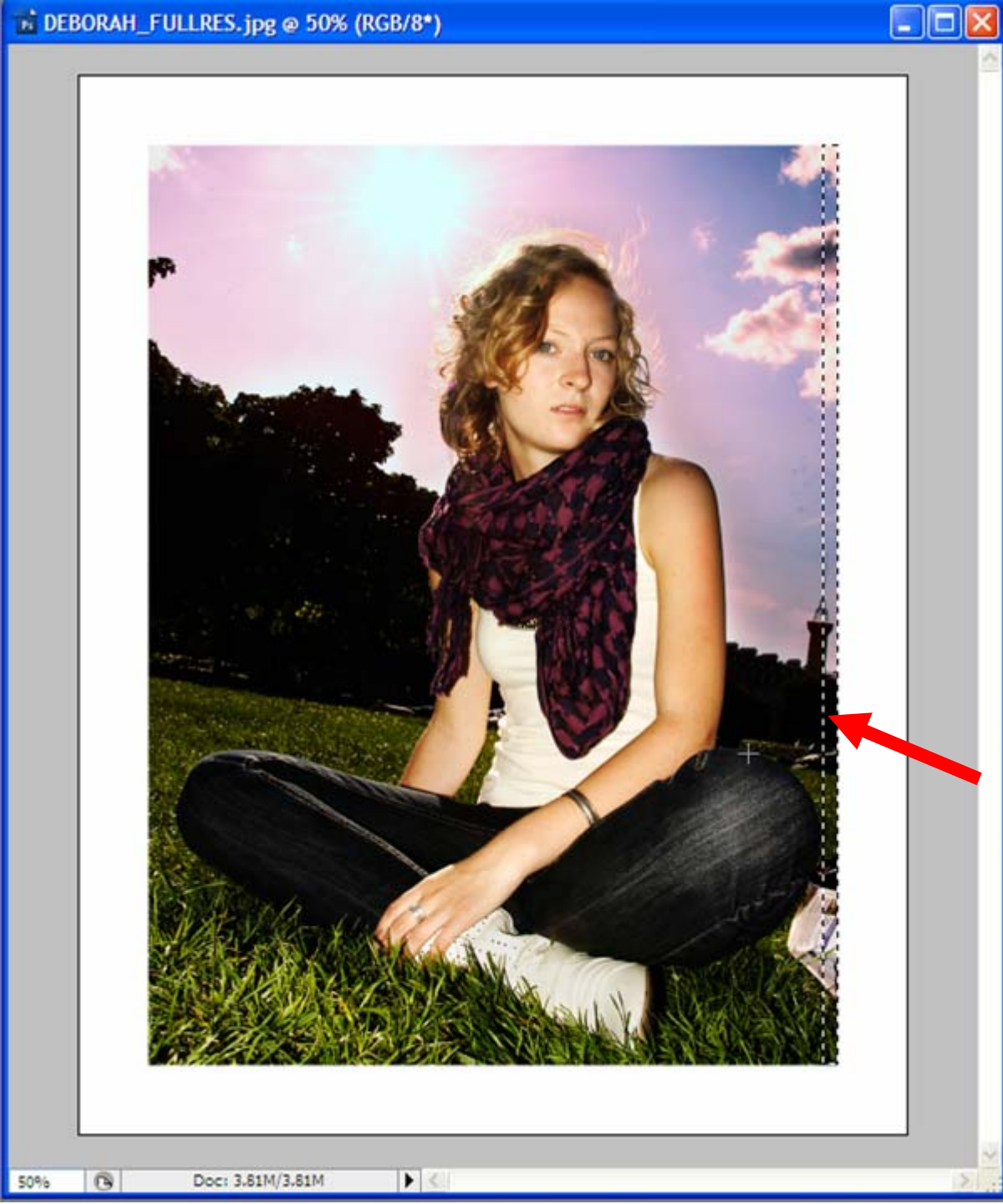


Crop the image leaving small extra margin.

This will be the image on the 'front' of the frame

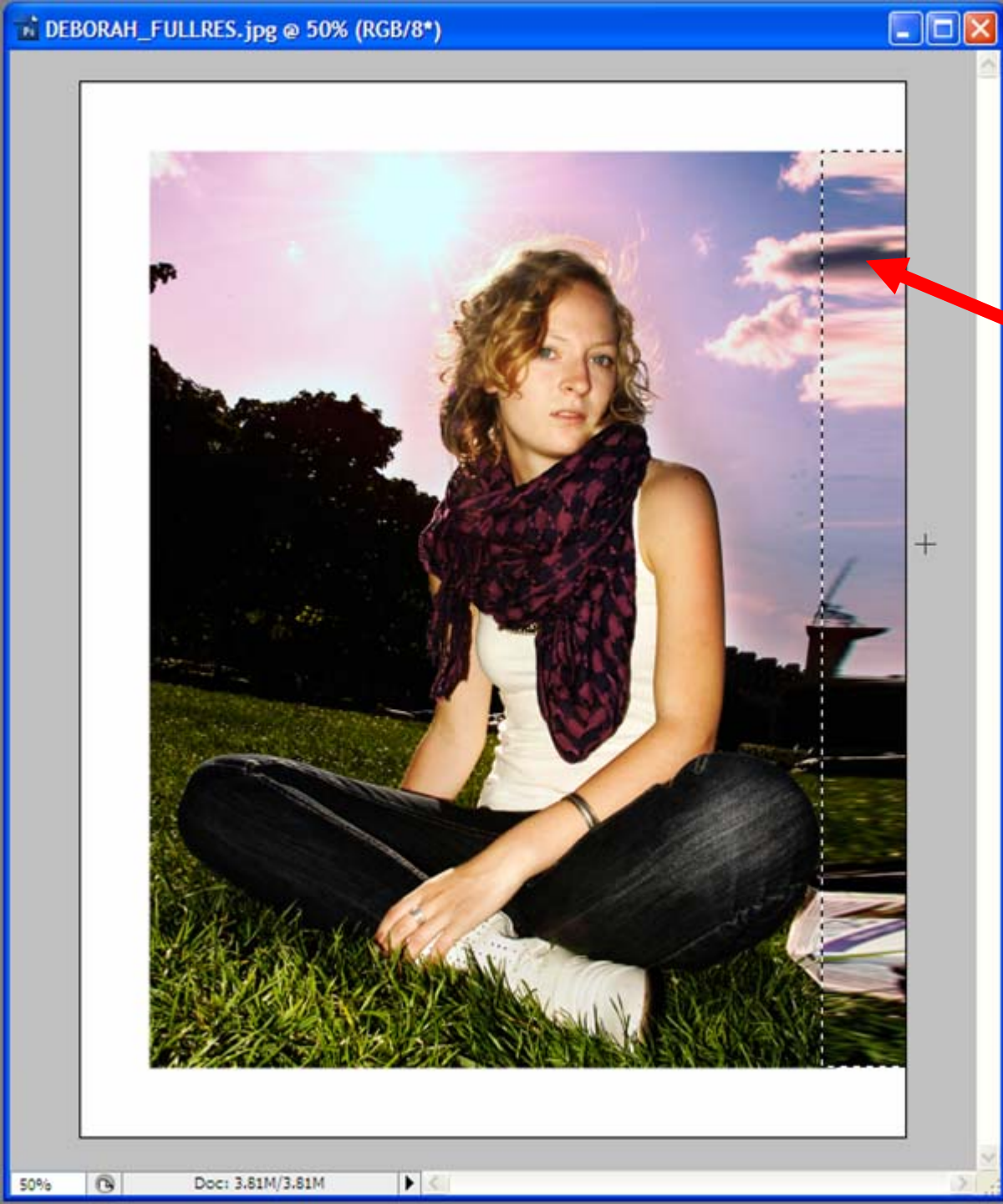


Increase canvas size to the size of the whole frame including edges



Option 1 – Stretch sides

Select narrow marquee



Select Free Transform
(CNTRL T) and 'stretch'
image
This still looks good on the
sides of the frame

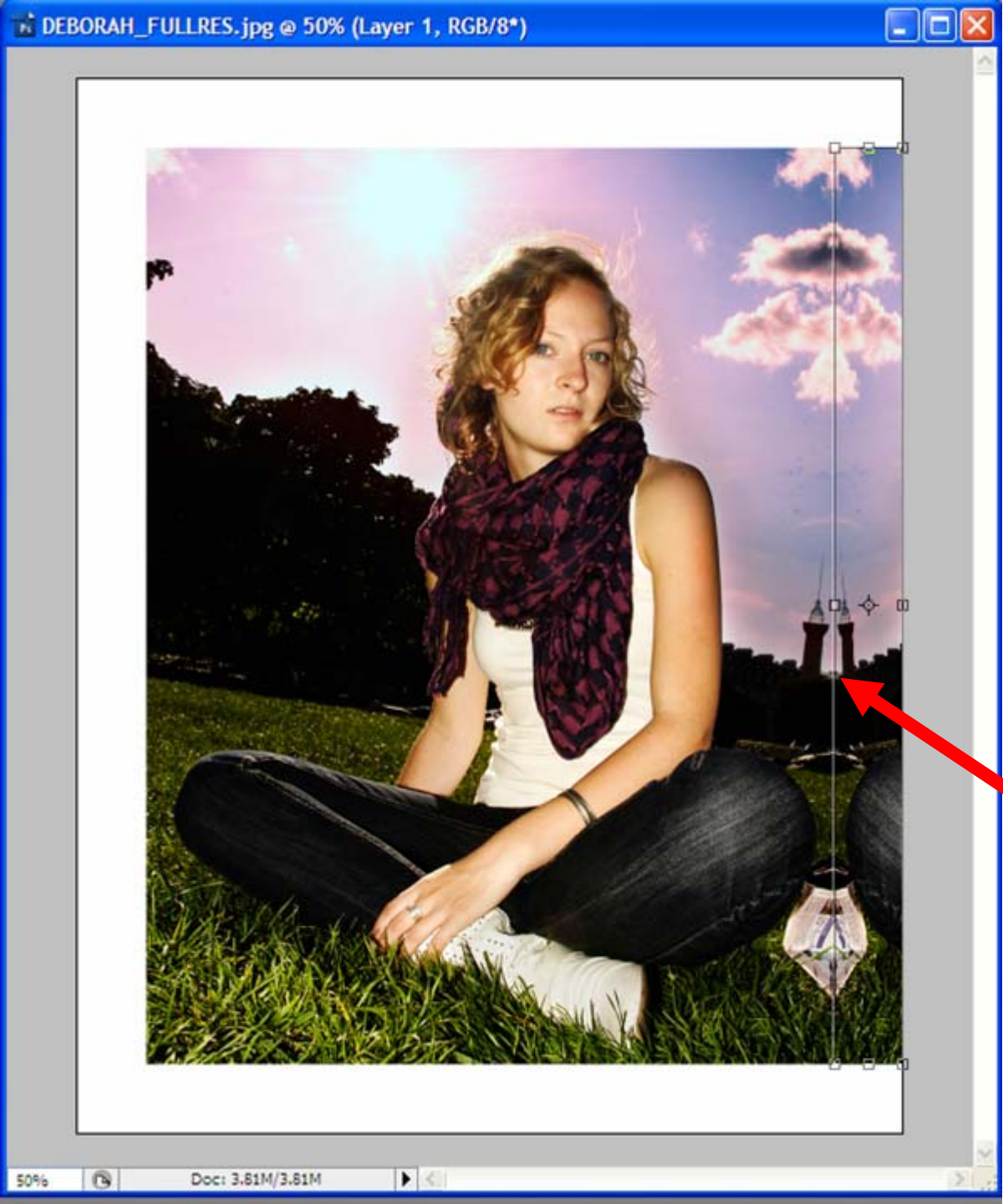


Option 2 – Mirror edge

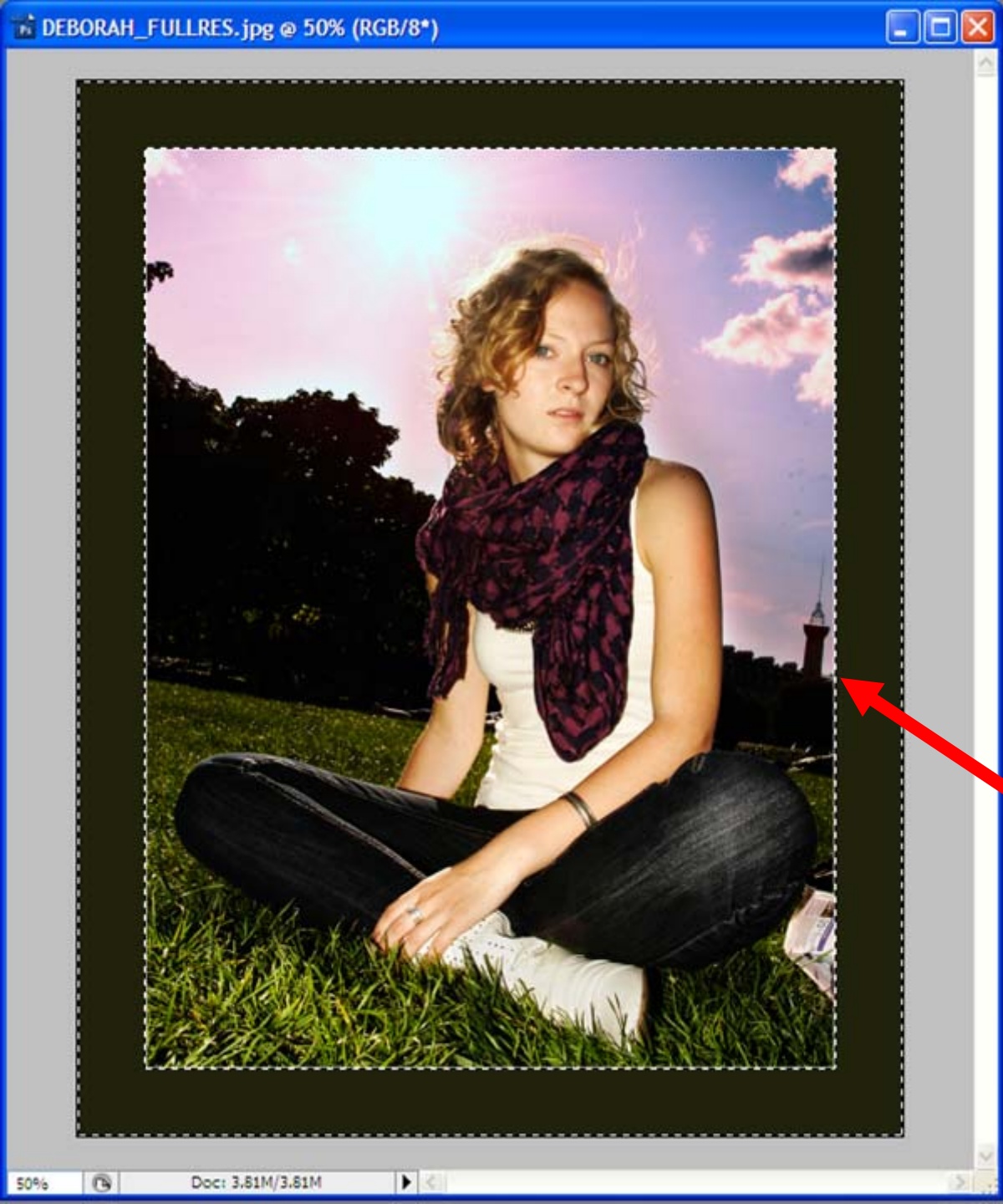
Select part of image with marquee tool.
Copy selection and paste.

Select Free Transform (CNTRL T) and drag left side to right side mirroring the image – see next slide.

This also still looks good on the sides of the frame



The edge is now mirrored



Option 3 – Plain edge

1. Select image with Marquee tool.
2. Inverse selection.
3. Select Paint Bucket tool.
4. Press ALT and select a colour from the image.
5. Paint into the border